

# High Nature Value Farming in the Northern Upland Chain

Gary Smith

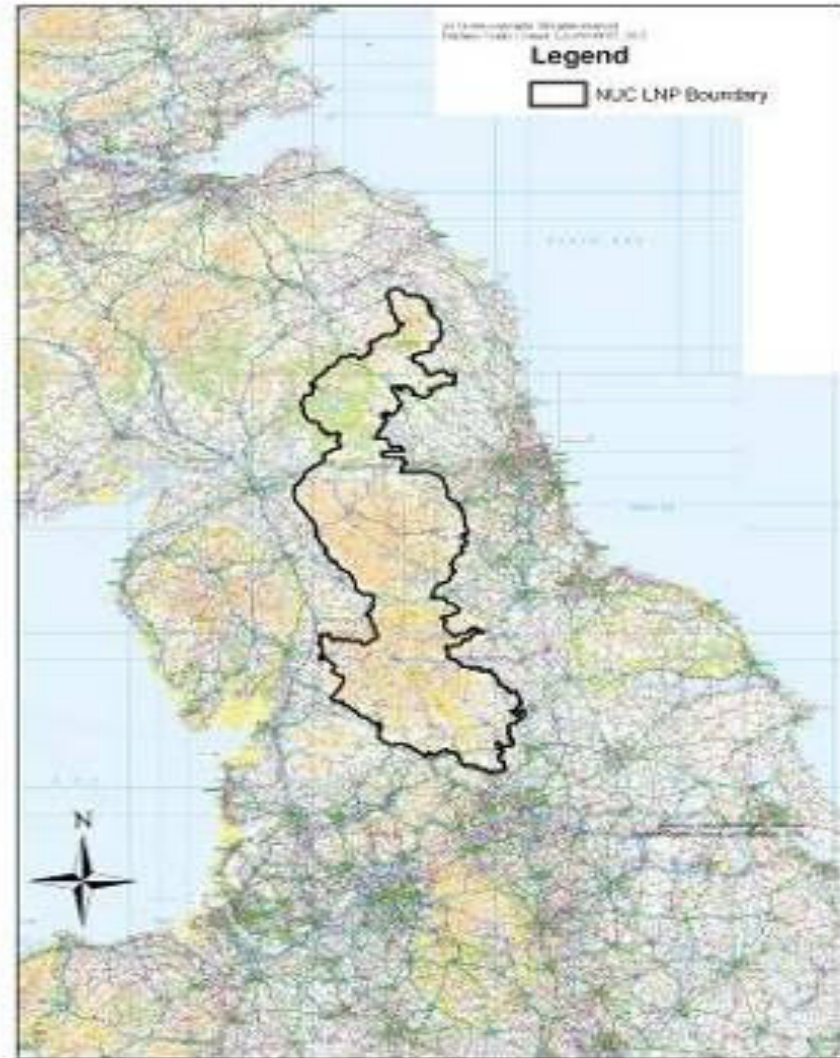
Yorkshire Dales National Park Authority





# The 'Northern Upland Chain' LNP

- Set up 2012
- Partnership of public, private and voluntary sectors
- Focused on securing practical benefits for nature and for the natural economy of the uplands.



# Common interests, shared priorities





# High Nature Value Farming

- Low intensity
- High levels of biodiversity
- Range of other public benefits
- *“The farming of most value for biodiversity conservation across Europe is the low-intensity raising of livestock on unimproved vegetation that is grazed, browsed, or cut for hay”*



# Low Economic Value farming?

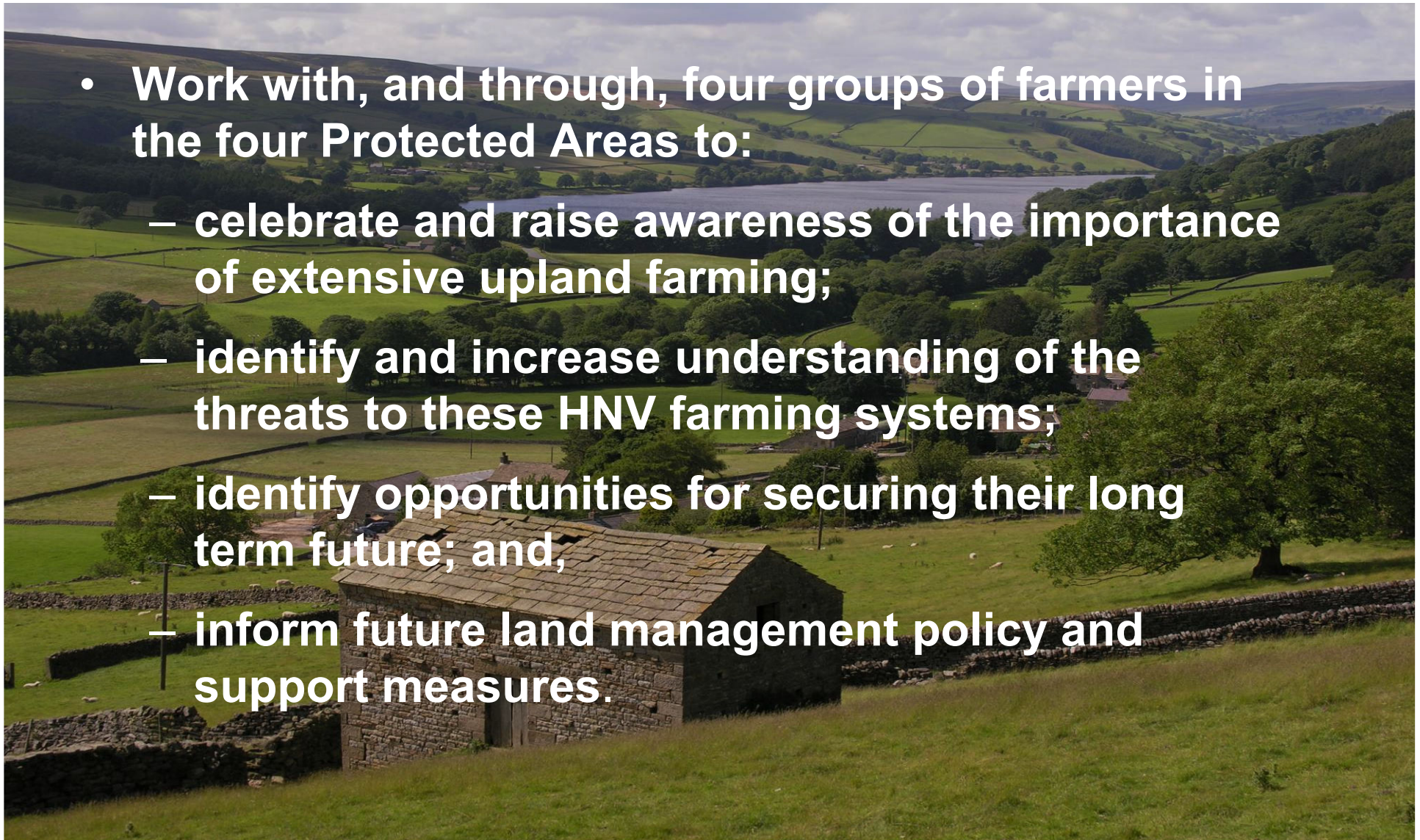


- Value to society is not well understood
- Marginal and difficult
- Low farm incomes



# Project objectives

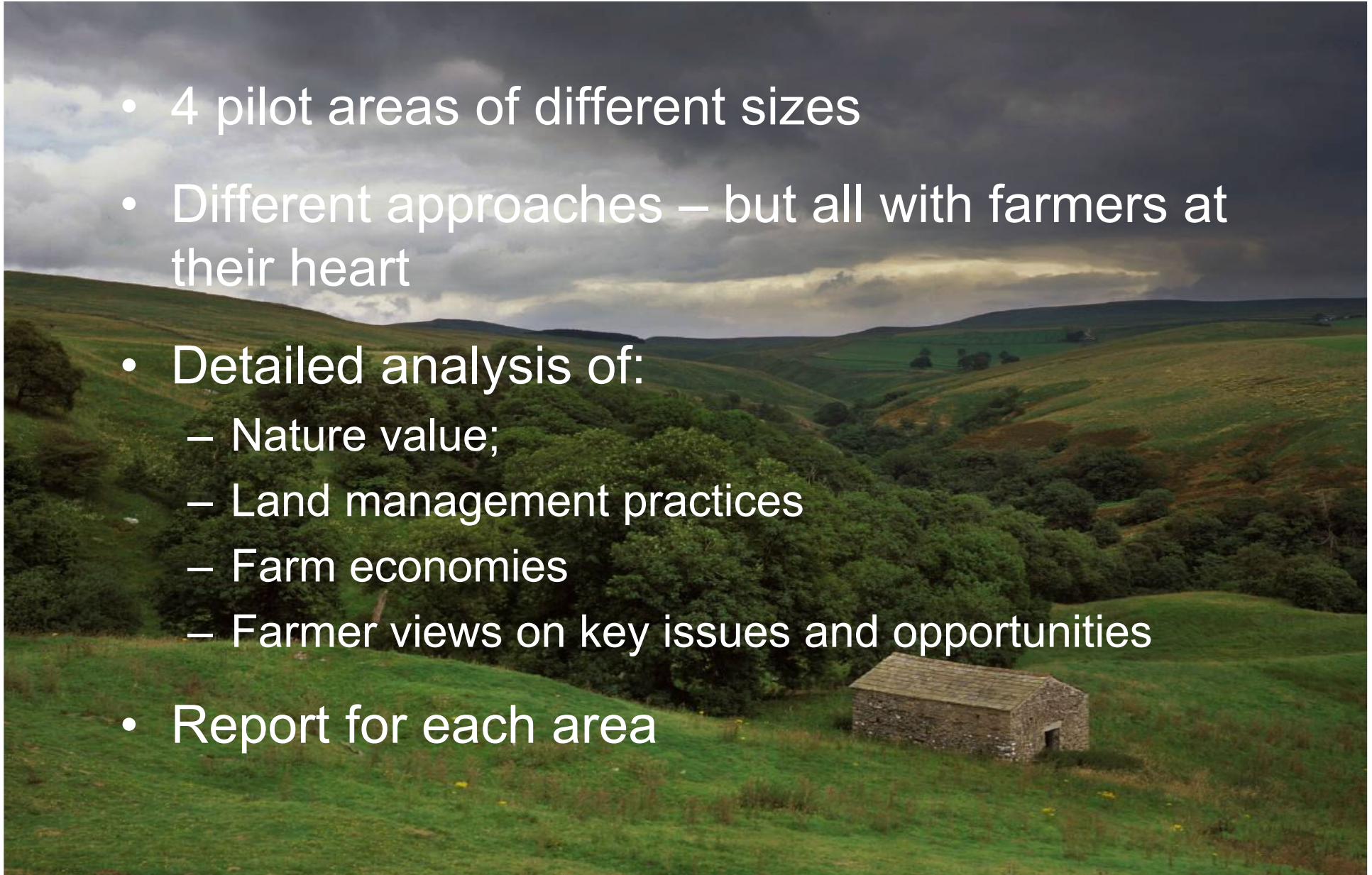
- Work with, and through, four groups of farmers in the four Protected Areas to:
  - celebrate and raise awareness of the importance of extensive upland farming;
  - identify and increase understanding of the threats to these HNV farming systems;
  - identify opportunities for securing their long term future; and,
  - inform future land management policy and support measures.





# Process

- 4 pilot areas of different sizes
- Different approaches – but all with farmers at their heart
- Detailed analysis of:
  - Nature value;
  - Land management practices
  - Farm economies
  - Farmer views on key issues and opportunities
- Report for each area



# Final stage...bringing it all together

- Produce a concise and accessible summary report
- Include recommendations for trialling potential new approaches





# A recipe for a successful seminar?

- To share the findings and lessons learnt from the 4 HNV farming case studies
- To seek views on the information gathered, and identify any evidence gaps;
- To seek views on a set of recommendations for further action.

