



WILD ATLANTIC  
NATURE LIFE

## Meaningful delivery

Results-based payment workshop

Caernarfon, Wales (12<sup>th</sup> March 2024)



An Roinn Tithíochta,  
Rialtais Áitiúil agus Oidhreachta  
Department of Housing,  
Local Government and Heritage



# Meaningful delivery?

- Meaningful delivery = Positive impacts
  - Farmers
  - Managing authorities
  - Productivity (food, fibre, nature, climate, water)
  - Cost effectiveness
  - Administrative verifiability
  - Broader impacts



An Roinn Tithíochta,  
Rialtais Áitiúil agus Oidhreachta  
Department of Housing,  
Local Government and Heritage



# Summary of presentation

- Overview of RBPS
- Benefits for farmers
- Evidence of improved environmental condition
- Evidence of operability at scale
- Challenges & caveats



An Roinn Tithíochta,  
Rialtais Áitiúil agus Oidhreachta  
Department of Housing,  
Local Government and Heritage



# Key aspects of RBPS approach

- Links payments to specified environmental outcomes
  - Outcomes evaluated using standardised methods (e.g. scorecard)
- Can be locally-adapted to prioritise target habitats/species
  - Can be integrated with national policy objectives
- Support for restoration actions
  - Possible to mitigate risks for landowners (who fail to deliver specified outcomes)
- Competitive implementation costs (vis-à-vis prescription-based)
  - Improved social and environmental outcomes



An Roinn Tithíochta,  
Rialtais Áitiúil agus Oidhreachta  
Department of Housing,  
Local Government and Heritage



# Benefits for farmers

- High acceptability:
  - 87% of farmers would participate in RBPS project similar to ENP (n=150)
  - 77% of PMP farmers would opt for a results-based scheme ahead of a measures-based scheme in future (n=470)
- High uptake and retention:
  - PMP participation rate >80%; retention rate of 96% from 2019 to 2023
  - WAN participation rate >85% across 8 target areas
  - Burren retention rate >99%



An Roinn Tithíochta,  
Rialtais Áitiúil agus Oidhreachta  
Department of Housing,  
Local Government and Heritage



# Benefits for farmers

- Fair payments
  - RBPS payments plus actions payments
  - Value-added/complementary funding (creates market)
    - €23m in Burren programme; €30m in WAN
- Improved skills, knowledge, appreciation
  - Farmers improved knowledge and liked learning new skills, knowledge about ecology, flora, fauna, etc.
  - Farmers feel they benefit from participation and feel valued



An Roinn Tithíochta,  
Rialtais Áitiúil agus Oidhreachta  
Department of Housing,  
Local Government and Heritage



# Benefits for farmers

- Success factors

- Flexibility for farmers, voluntary approach
- Training and upskilling
- Networking and peer-to-peer learning
- Local adaptation
- Specific outcomes focused, support provided to achieve results
- Intuitive score-based system



An Roinn Tithíochta,  
Rialtais Áitiúil agus Oidhreachta  
Department of Housing,  
Local Government and Heritage



# Evidence of improved environmental condition

- Burren Programme
  - Year-on-year improvements in scores (6% for T1, 14% for T2, 10% for T3)
- UK RBAPS
  - Environmental performance better in RBAPS v control sites (statistically significant,  $P < 0.05$ )
- PMP
  - Increase in avg scores from 62 – 67; reduced risk to water quality by two-thirds
- WAN
  - Increase in score from 58 to 66
- ENP
  - Ecological objectives met on 77% of plots; 17% partially met



An Roinn Tithíochta,  
Rialtais Áitiúil agus Oidhreachta  
Department of Housing,  
Local Government and Heritage





# Evidence of improved environmental condition

- Key success factors
  - Area-based landscape approach
  - Whole-farm assessment (e.g. PMP and WAN)
  - Responsiveness of system to react to issues identified
  - Training, knowledge, improved management skills for farmers
  - Peer-to-peer learning among farmers
  - Local support from multidisciplinary project teams

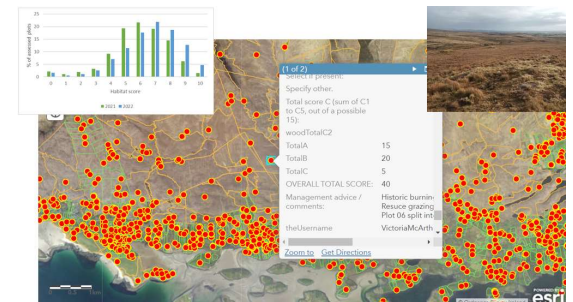


An Roinn Tithíochta,  
Rialtais Áitiúil agus Oidhreachta  
Department of Housing,  
Local Government and Heritage



# Operability at scale

- High-level ecological data informs landscape level restoration plans
  - E.g. 4,800 scorecards across 63,000ha in WAN (2022)
- Transaction/administrative/implementation costs
  - 20% for PMP and Burren considered excellent value based on outcomes and impact
- Potential for integration with national policies
  - (Common) Agricultural Policy; Water policy; Climate policy; Biodiversity/Nature policy; Rural development

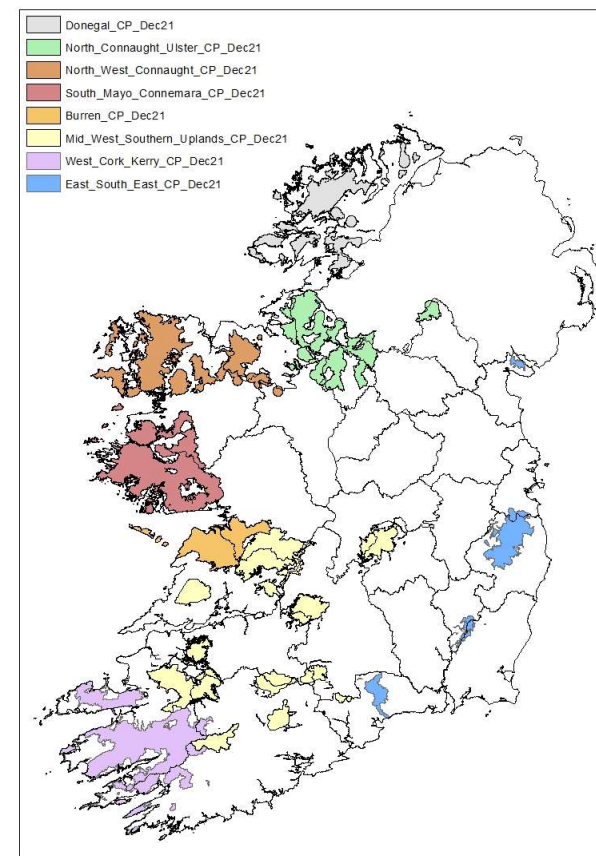


An Roinn Tithíochta,  
Rialtais Áitiúil agus Oidhreachta  
Department of Housing,  
Local Government and Heritage



# Upscaling of RBPS approach – ACRES CP

- Eight ACRES Cooperation Project teams
- Roll-out of results-based model to 20,000 farmers
  - Results-based, supporting actions & landscape scale payments
    - Funded via CSP AECM, NPIs, Cooperation Articles
- We now have an implementation mechanism for conservation measures & restoration actions
  - Integration of land use policies
  - Delivery of environmental services (water, biodiversity, climate)

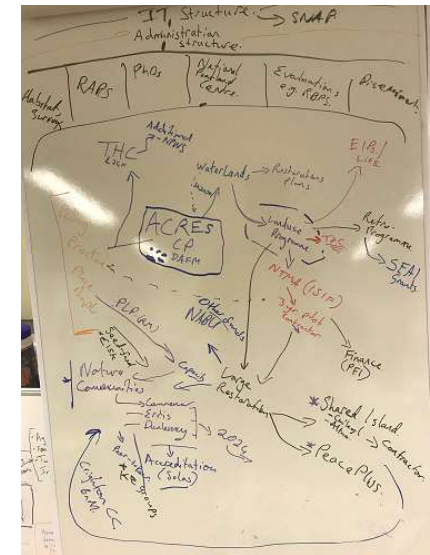


An Roinn Tithíochta,  
Rialtais Áitiúil agus Oidhreachta  
Department of Housing,  
Local Government and Heritage



# Caveats and challenges

- Evidence of non-delivery of previous prescription – based programmes, however we compare RBPS V Perfection
- Significant capacity requirements to deliver an RBPS effectively
  - ICT and admin, which can be substantial.
- A multi-disciplinary team is required to deliver RBPS
- Coherent messaging and a common understanding of the technical aspects
  - should be aligned towards a common goal.
- High cooperation with other stakeholders and intermediary actors needed
  - Need to encourage and implement protocols that allow improved data sharing.
  - Advisor role is crucial. Engagement through continuous training and support is required to ensure high quality delivery.



An Roinn Tithíochta,  
Rialtais Áitiúil agus Oidhreacht  
Department of Housing,  
Local Government and Heritage





# WILD ATLANTIC NATURE LIFE

[www.wildatlanticnature.ie](http://www.wildatlanticnature.ie)

@WAN\_LIFEIP @WildAtlanticNature

[info@wildatlanticnature.ie](mailto:info@wildatlanticnature.ie)

Derek.McLoughlin@npws.gov.ie



**NPWS**

An tSeirbhís Páircenna  
Náisiúnta agus Fiadhúla  
National Parks and Wildlife  
Service



An Roinn Tithíochta,  
Rialtais Áitiúil agus Oidhreacht  
Department of Housing,  
Local Government and Heritage



Teagasc  
Agriculture and Food Development Authority



COILLTE  
GROW - TRANSFORM - SUSTAIN



BORD NA MÓNA



Fáilte Ireland  
National Tourism Development Authority



USC IBADER  
Instituto de Biodiversidade  
Agrária e Desenvolvimento Rural



An Chomhairle Oidhreacht  
The Heritage Council



RTÉ



An Roinn Talmhaíochta,  
Bia agus Mara  
Department of Agriculture,  
Food and the Marine



Northern & Western  
Regional Assembly



An Roinn Tithíochta,  
Rialtais Áitiúil agus Oidhreacht  
Department of Housing,  
Local Government and Heritage



WILD ATLANTIC  
NATURE LIFE