

Land and Nature Strategy

NT response to State of Nature Report



Strategy Objectives

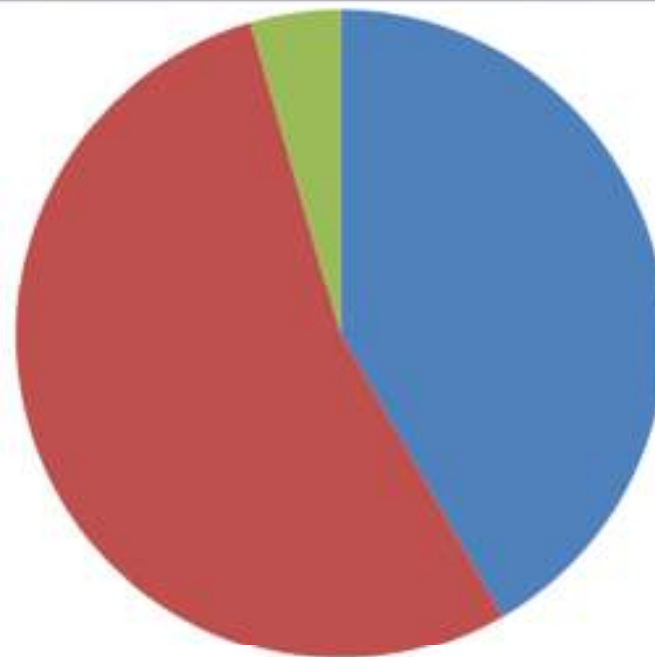
Objective 1: **Better** : Improve condition of our A/SSSIs and existing Priority Habitats

Objective 2: **Bigger and More** : Restoring/creating 25000 ha of Priority habitat by 2025

Objective 3: Ensure all our land achieves a high nature status – with the milestone of 50% of let land, and all in-hand land by 2025

Objective 4: Ensure all our land above minimum standard

Obj 1 - Better



■ Favourable

■ Unfavourable recovering

■ Unfavourable and unfavourable declining

Obj 2 - Bigger and More

- ▣ Making existing isolated habitats 'Bigger' is particularly valuable because larger populations are inherently more resilient, it buffers them and it can join them up to other patches of habitat.
- ▣ New habitat that doesn't adjoin existing (i.e. 'More') can fill gaps in the landscape, and create habitats that are sorely missing. In the right locations they can also make a significant contribution to how permeable and 'Joined up' the landscape is

Obj 3 - Joined

- ▣ High Nature Status: we would love all our land to be managed in a way that is 'nature-friendly'. This means looking after the areas of Priority Habitats, but also farming the land in between in ways that benefits nature rather than being hostile to it.

Obj 4 – Minimum Standard

- ▣ We will make sure all our land is managed in a responsible way, and no serious harm is being done to nature. We will set a threshold for what we believe is the minimum acceptable, and steadily remove any 'no-go' areas for wildlife in our landscapes.

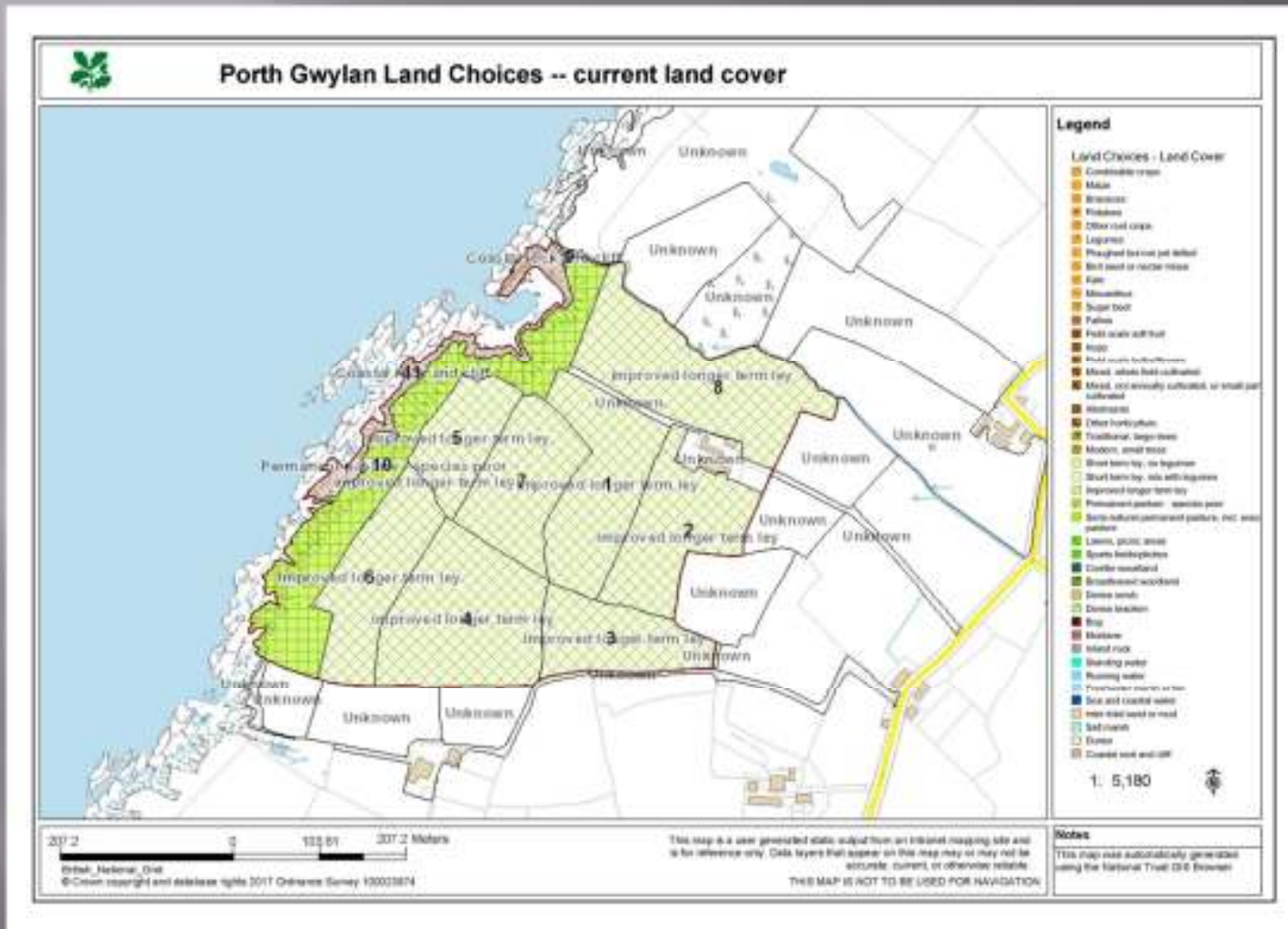
Achieving the Goals of LON

- ▣ Major changes at Porth Gwylan – test bed for success
- ▣ 3 PfO trial areas – TBC but focus on making significant gains in terms of Bigger/Better/More and Joined Up
- ▣ In Hand Land – Must reach Cat 2 on Land Condition Assessment
- ▣ Continued improvement in nature value and condition of designated sites – grazing/boundaries etc.
- ▣ Smaller yet collectively significant improvements across NT land and adjoining landholdings – bracken spraying/ grazing

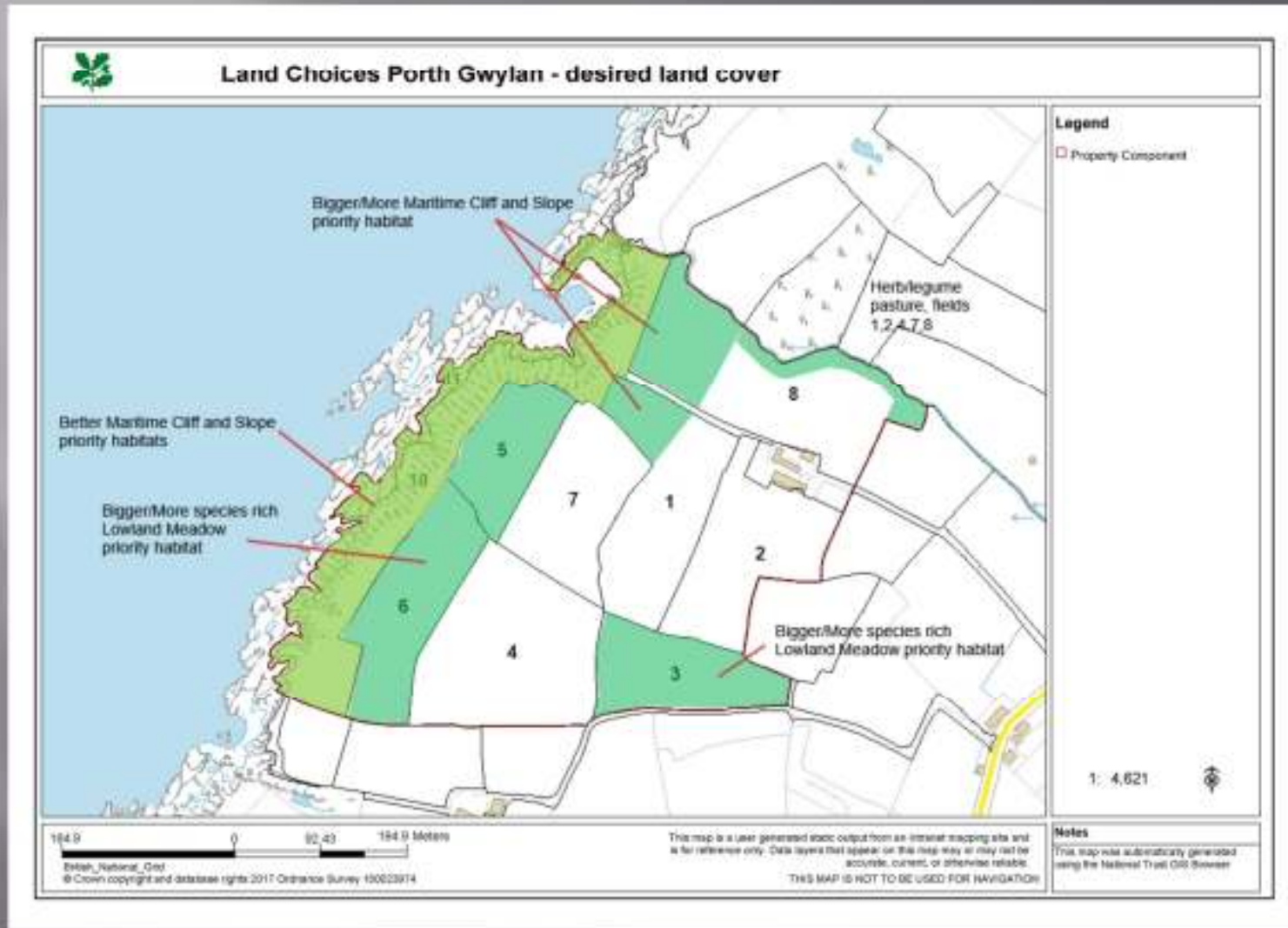
Opportunities



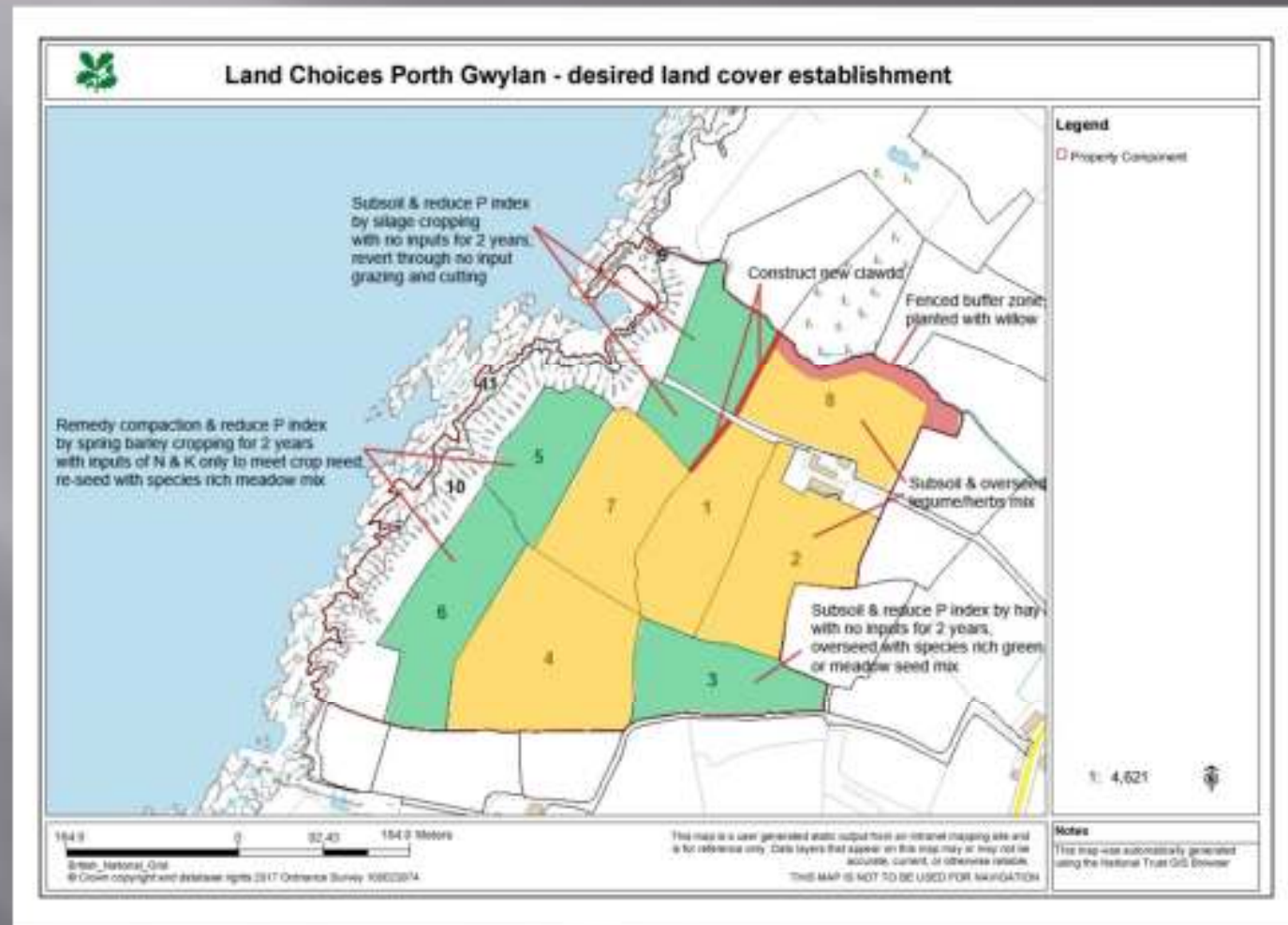
Porth Gwylan - trialling opportunities



Porth Gwylan - Future Habitats



Porth Gwylan - How to achieve HNS



Using PfO as a way of delivering L&N Goals

- ▣ One of Two PfO Trials currently being run by National Trust
- ▣ Offers opportunities to test future ways of ensuring success - address issues highlighted by State of Nature Report
- ▣ The future of Post Brexit Agri Environment Payments?
- ▣ Can it provide a vehicle for more?

What is the focus?

- ▣ Whole Farm improvements – marginal gains = big difference
- ▣ Habitat gain in all areas – priority habitats key, but just as important are improved fields, soil health etc
- ▣ Evaluating current farm business and offering opportunities for enhancement
- ▣ Breaking the cycle of “well that’s what we’ve always done”

Better Environment = Community Economic Enhancement?

- ▣ PES but not the normal carbon capture and flood prevention ideas?

Farmers and wider community able to take advantage of an area becoming synonymous with HNV

- ▣ Diversification – green tourism
- ▣ Diversification – high value produce

What do the public perceive 'good' to look like?

Probably the biggest challenge



Potential for More



Diolch yn Fawr